



Security

3.5"

MAIN VAULT DOOR SERIES



PRIVACY • SECURITY • ASSET



STRENGTH

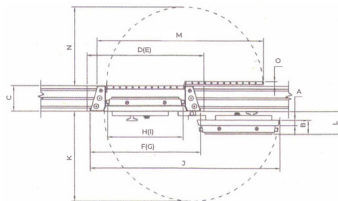


CUSTOMER SERVICE



WORLD CLASS

SPECIFICATIONS



Ref	Specifications (mm)	3.5" Main Vault Door	Remark
A	Barrier Material Thickness	89	3.5 inch MVD, Secured by 2 keylocks, and 1 (one) 4 wheel Combination Lock, Grille Gate secured by 2 keylocks and Emergency Ventilator
B	Overall Door Thickness	211	
C	Recommended Wall Thickness	250	
(D)	Wall Opening Required - Height	2400	
E	Wall Opening Required - Width	1500	
(F)	Overall Height of Frame	2,256	
G	Overall Width of Frame	1,383	
(H)	Clear Opening - Height	2,000	
I	Clear Opening - Width	900	
J	Overall Width When Door Open at 180 Degree	2,296	
K	Projection When Door Open at 90 Degree	1,098	
L	Projection When Door Open at 180 Degree	311	
M	Overall Width of Gate When Open at 180 Degree	1,992	
N	Projection of Gate When Open at 90 Degree	949	
O	Projection of Gate When Open at 180 Degree	45	
	Moving Bolts / Bolts Diameter 50 mm	18 Sets	
	Weight +/- 10 %	1,165 kg	

QUALIFICATIONS

3.5" Vault Door : 2 keylocks, 1 4 wheel combination lock, MGG-2KL & Em.Ven, 300 mm WT.



SSI (Structural Steel Integration)

Crafted from reinforced thick steel and seamlessly welded, boasts a strong unified structure that is highly resistant to forced entry and nearly indestructible.



XLarge Bolts

Equipped with 50 mm diameter bolts and rust-resistant coating, these locks strengthen the door panel and protect against prying and cutting, enhancing security.



CS350 Barrier Material

The CS350-infused material boasts fire resistance, anti-drill strength, and extra thickness for superior protection against heat, impact, and fire.



Multi Protection Door

The door features 211 mm thickness, reinforced with 89 mm alloy steel and fire-retardant features, combines drill resistance and reinforced hinges for enhanced security.



S&G Combination Lock

The UL-certified S&G combination locks feature a 4-digit code with over 100 million possible combinations and include a combination ring to deter code theft.



8 Lever Key Lock

This lock has an 8-lever, double-bit system and comes with a durable, hard-to-copy metal key, increasing security against counterfeiting.



Automatic Relock System

The safe has an automatic relock system with safety glass and a solid code mechanism to prevent tampering, ensuring reliable security.



Drill Protection Alloy Steel

With a puncture-resistant steel plate made from a custom alloy, it protects the key code mechanism, keys, and all points.



High Quality Paint

The door has been polished and treated for rust prevention before being painted in an automotive oven to ensure a long-lasting and shiny finish.

